

stripey

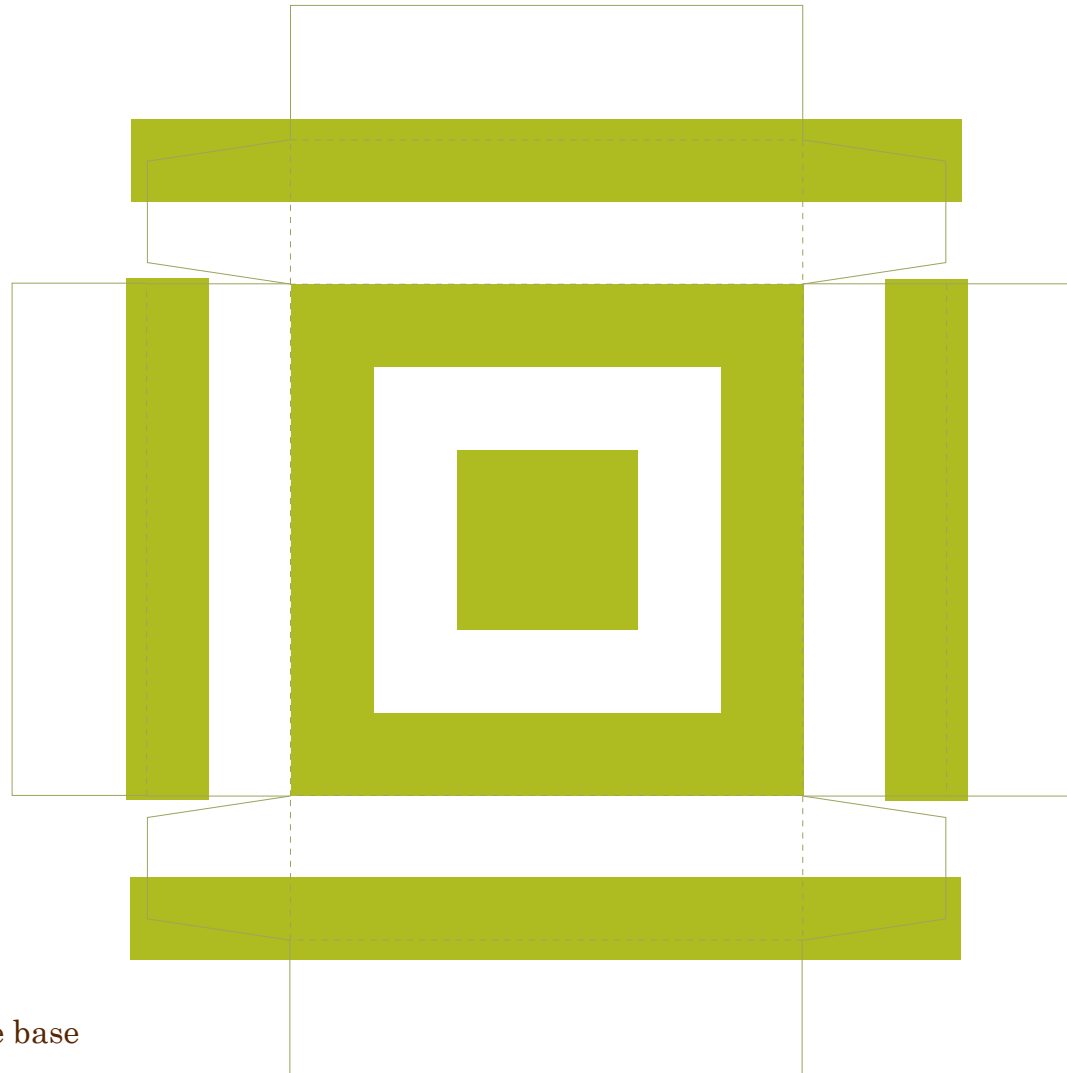
box lid-outside (side 1)

1. print side 1 only on 8.5x11 cardstock, then turn paper over & print side 2.

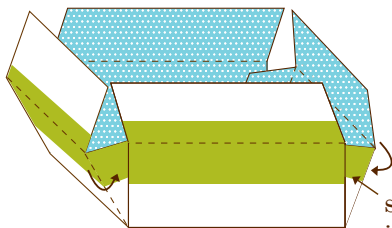
2. cut on solid lines

3. fold on dotted lines

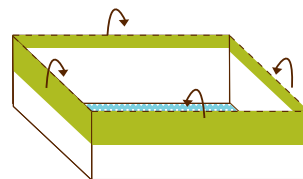
tip: score the lines before folding with a ruler and a scoring tool or even a paper clip!



4. follow diagram to assemble base



step 1: fold side flaps in first & glue



step 2: fold top flaps down & glue to hide side flaps completely.